

RESTRICTED

GENERAL INFORMATION

U.S.S. AYLWIN, Torpedo Boat Destroyer No. 47

U.S.S. PARKER, Torpedo Boat Destroyer No. 48

U.S.S. BENHAM, Torpedo Boat Destroyer No. 49

U.S.S. BALCH, Torpedo Boat Destroyer No. 50

INFORMATION RELATIVE TO ITEMS UNDER COGNIZANCE
OF THE BUREAU OF CONSTRUCTION AND REPAIR
NAVY DEPARTMENT

~~CONFIDENTIAL~~

Serial No. 21

GENERAL INFORMATION

JOINT BOOKLET FOR

U. S. S. AYLWIN, Torpedo Boat Destroyer No. 47

U. S. S. PARKER, Torpedo Boat Destroyer No. 48

U. S. S. BENHAM, Torpedo Boat Destroyer No. 49

U. S. S. BALCH, Torpedo Boat Destroyer No. 50

INFORMATION RELATIVE TO ITEMS

UNDER COGNIZANCE OF

BUREAU OF CONSTRUCTION AND REPAIR

NAVY DEPARTMENT

BUILDERS:

Wm. Cramp and Sons' Ship and Engine Building Company

PHILADELPHIA, PA.

OFFICE OF THE SUPERINTENDING CONSTRUCTOR

FOR U. S. NAVY

WM. CRAMP AND SONS' SHIP AND ENGINE BUILDING COMPANY

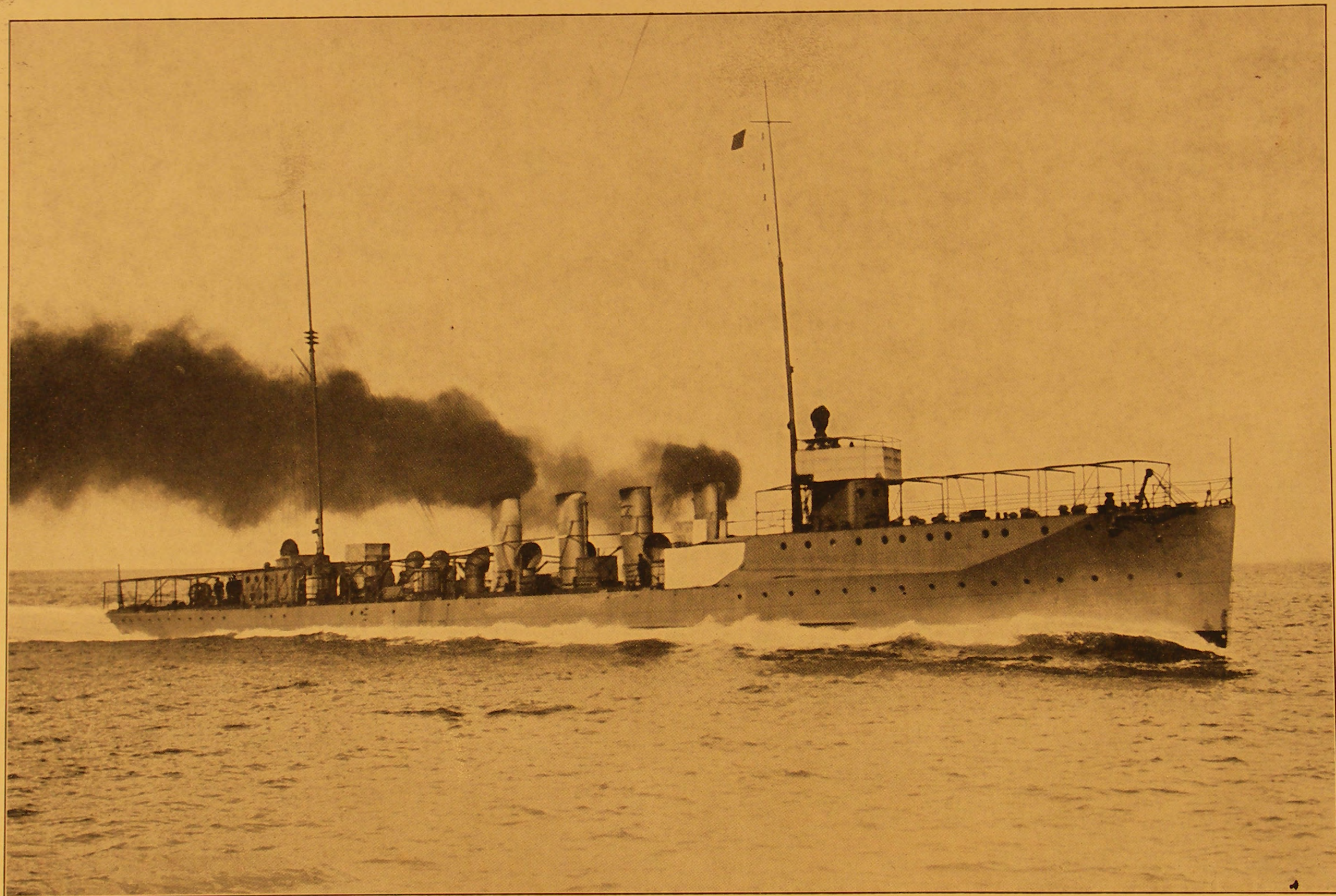
PHILADELPHIA, PA.

FINISHED PLAN NO. 38 TAKEN FROM WORK

1913

BUREAU OF SHIPS
NATIONAL ARCHIVES FILES

50636



GENERAL

U.S. ALVIN

U.S. PARKER

U.S. BENHAM

U.S. BALCH

BUREAU OF O

In Camp and Sea

OFFICE OF THE

THE CHIEF AND COM

FINISHED PLAN

NATION

COMPLEMENT—MESSES—BERTHS

OFFICERS.

Commanding Officer	1
Wardroom officers	4

CHIEF PETTY OFFICERS.

Chief boatswain's mate.....	1
Chief gunner's mate.....	1
Chief quartermaster (Navigating).....	1
Chief machinist's mates.....	3
Chief water tender.....	1
Hospital steward	1

SEAMAN BRANCH.

Coxswains	2
Gunner's mates, first class.....	2
Gunner's mates, second class.....	2
Quartermaster, first class.....	1
Quartermaster, second class.....	2
Seamen	18
Ordinary seamen	13

ARTIFICER BRANCH.

Electrician, first class.....	1
Electrician, first class, wireless.....	1
Carpenter's mate, second class.....	1

ARTIFICER BRANCH.

(Engine room force)

Machinist's mates, first class.....	3
Machinist's mates, second class.....	3
Water tenders	5
Boiler maker	1
Blacksmith	1
Coppersmith	1
Oilers	4
Firemen, first class.....	10
Firemen, second class.....	7

SPECIAL BRANCH.

Yeoman, first class, Commanding Officer.....	1
Yeoman, second class, engineer department...	1

COMMISSARY BRANCH.

Ship's cook, first class.....	1
Ship's cook, second class.....	1

MESSMEN BRANCH.

Cabin steward	1
Cabin cook	1
Mess attendant	1

RECAPITULATION.

Commanding Officer	1
Executive Officer	1
Senior engineer officer.....	1
Torpedo officer	1
Duty officer	1
Chief petty officers.....	8
Seaman branch	40
Artificer branch	3
Artificer branch (engine room force).....	35
Special branch	2
Commissary branch	2
Messmen branch	3
Total	98

NUMBER OF MESSES.

Crew's	5
Chief petty officers'.....	1

STATEROOMS AND BERTHS.

Commanding Officer's stateroom and berth...	1
Wardroom officers' staterooms and berths...	5
Yeomans', office and berth.....	1
Chief petty officers' berths (in compt. A-20)...	8
Crew's berths, forward.....	44
Crew's berths, aft.....	40

GENERAL DIMENSIONS

Length over all.....	305'-3"
Length between perpendiculars.....	300'-0"
Projection forward of F. P.....	2'-0"
Projection aft of A. P.....	3'-3"
Length of straight keel.....	*260'-10 1/2" about †255'-10 1/2"
F. P. to straight keel.....	11'-4 1/2" about

* For U. S. S. AYLWIN only.

† For U. S. S. PARKER, BENHAM and BALCH.

A. P. to straight keel.....	*27'-9"	†32'-9"
Length of fender.....	171'-6"	
F. P. to fender.....	59'-6"	
A. P. to fender.....	69'-0"	
Length of bilge keel.....	141'-9"	
F. P. to bilge keel.....	84'-0"	
A. P. to bilge keel.....	74'-3"	
Length on 9'-3" waterline (L. W. L.).....	300'-0"	
Breadth extreme, over fenders.....	31'-2"	
Breadth extreme, on 10-foot waterline.....	30'-6"	
Breadth molded, on 10-foot waterline.....	30'-5½"	
Breadth molded, at 8-foot waterline.....	29'-6¾"	
Mean draft to bottom of keel at mean trial displacement, about	9'-3"	
Midship section, frame No. 85-5/7.....
Frame spacing (regular).....	1'-9"	
Displacement for 9'-3" waterline, tons salt water.....	*1018.0	†1015.2
Tons per inch at 9'-3" waterline.....	14.32	
Area of wetted surface, square feet.....	*9650.0	†9500.
Coefficient of fineness, block.....	*0.420	†0.419
Coefficient of fineness, midship section.....	0.677	
Coefficient of fineness, 9'-3" waterline.....	0.657	
Total area of rudder, square feet.....	59.79	
Area of midship section, square feet (Frame No. 85-5/7) 6" fwd. Fr. 86	191.5	

* For U. S. S. AYLWIN only.

† For U. S. S. PARKER, BENHAM and BALCH.

HEIGHTS ABOVE DESIGNED LOAD WATERLINE.

Designed load waterline above bottom of keel amidships	9'-3"	
Top of ball on foremast.....	90'-5-9/16"	
Top of truck light on mainmast.....	90'-2¼"	
Top of pilot house at centerline (Frame No. 40) (Top of plating).....	24'-0¾"	
Forecastle deck plating at stem (top of plating).....	17'-0⅞"	
Main deck plating at stern (top of plating).....	8'-0-7/16"	
Bridge at side Frame No. 40, top of beam.....	23'-6½"	
Bridge at centerline above forecastle deck (molded)	7'-6"	
Berth deck beams at Frame No. 45.....	1'-9⅞"	
Berth deck beams at Frame No. 134.....	0'-9½"	
Floor of searchlight platform (top of plating).....	30'-6¼"	
Center line of forward searchlight (Frame No. 43)	34'-5"	about
Center line of aft searchlight (Frame No. 132½).....	19'-4¼"	about
Center line of 5.2M by 45CM Twin Torpedo Tube (Frame 74 port).....	11'-5½"	about
Center line of 5.2M by 45CM Twin Torpedo Tube (Frame 95 st'b'd.).....	11'-3"	about
Center line of 5.2M by 45CM Twin Torpedo Tube (Frame 116 port).....	11'-0¾"	about
Center line of 5.2M by 45CM Twin Torpedo Tube (Frame 116 st'b'd.).....	11'-0¾"	about
Center line of 4 in. R. F. G. (Frame No. 25 C. L.)	20'-9"	about
Center line of 4 in. R. F. G. (Frame No. 53 port)	13'-0¾"	about
Center line of 4 in. R. F. G. (Frame No. 53 st'b'd.)	13'-0¾"	about
Center line of 4 in. R. F. G. (Frame No. 160 C. L.)	12'-1¾"	about

CARE AND PRESERVATION

Attention is invited to Instructions for the Administration of the Naval Establishment of the United States (Naval Instructions) 1913, particularly to Chapter 25, page (164-I) Article 2702, Care and Preservation of hulls of ships and of mechanical contrivances pertaining thereto. *Inspection of Compart-*